



FOLGA INTELLIGENT TECHNOLOGY 2021 ~ 2022

广东富高智能科技有限公司

玻璃双直边高速磨边生产线
全自动玻璃卧式四边磨边生产线
整厂智能化连线项目

产品不断更新, 如有更改, 恕不另行通知。
The products updating constantly, please forgive us do not issuing a separate notice if there is any designing change.

广东富高智能科技有限公司
FOLGA INTELLIGENT TECHNOLOGY CO.,LTD



升级前
BEFORE

佛山市顺德区富高玻璃机械有限公司
FOSHAN FOLGA GLASS MACHINERY CO.,LTD



Folga 富高

升级后
AFTER

广东富高智能科技有限公司
GUANGDONG FOLGA INTELLIGENT TECHNOLOGY CO.,LTD

为玻璃深加工行业创造更多可能

Create more possibilites for glass deep processing industry.

核心价值观：

诚信、真诚、敬业、专业

经营理念：

以人为本, 品德为先, 谦虚做人, 务实做事

企业精神：

富高用心将一件事做到极致

CONTENTS

01

INT.

企业简介
Who We Are

08

FJM

玻璃全自动双直边高速磨边生产线
FJM Series Glass High-speed
Double Edging Machine Production Line

26

FGS

玻璃全自动卧式四边磨边生产线
FGS series Glass Automatic Horizontal
Four-side Edging Machine Production Line

33

FZM

FZM9玻璃立式直线磨边生产线
FZM Glass Straight Line Edging Machine

37

SER

服务体系
What We Can Provide

FOLGA Profile

WE START
FROM
2004



富高成立于**2004**年，原名称为佛山市顺德区富高玻璃机械有限公司，经品牌优化升级，自2020年起，更名为广东富高智能科技有限公司。

用心做品牌，全心为客户：十七年的成长，创新、品质和服务已经成为根植于富高血液中的文化。以初心、洞察、思考、实践，发掘可能、解决问题、为客户创造价值，永远是富高前行的目标与方向。

自成立以来，秉承着为玻璃深加工行业创造更多可能的企业使命，致力于研发、设计玻璃智能高速磨边生产线项目：玻璃全自动双直边高速磨边生产线和玻璃全自动卧式四边磨边机生产线，并建立起完善的销售和服务体系。

未来，富高将继续为您打造性能卓越、品质上乘、体验非凡的产品，与您一起发展，一起成长。

STEP BY STEP



2004

公司成立，同年研发并生产超过10种玻璃加工设备。
Company was founded. In the same year, developed and produced more than 10 kinds of glass processing equipment.

2006

研发并生产玻璃双直边磨边机项目，各项目进入国际市场。
Researched & produced glass double straight edge grinding processing equipment, each project swiftly get into the international market.

2012

研发并生产玻璃全自动卧式四边磨边机，出口机器销售超过40个国家地区。
Researched & produced glass automatic horizontal four sides grinding machine. Machines are sold to more than 40 countries.

2015

项目优化升级，致力于为客户打造整厂智能生产连线项目，主营项目：玻璃双直边高速精磨生产线，玻璃双直边高速粗磨生产线，全自动卧式玻璃四边磨边生产线等。
Projects optimized & upgraded, commit to creating whole plant of intelligent production project for customers. Main project: Glass double edging high-speed production line, Glass double edging high-speed rough grinding production line, Glass automatic horizontal four side edging production line & etc.

2020

公司注资并扩大规模，品牌优化升级，同年研发并生产出第四代玻璃双直边高速精、粗磨连线项目及新一代玻璃全自动卧式四边磨边机，并成立新媒体运营和设计团队，打造活力、专业的国际化品牌形象。
Company invested, scale expanded, brand optimized and upgraded. In the same year, produced the 4th generation of glass high-speed double-line fine & rough edging production line, new generation of automatic horizontal four side edger. Set up a new media and design team to build a young & professional brand image.

专业团队 | Professional Team

25

销售团队 /人
Sales Team

30

安装团队 /人
Installation Team

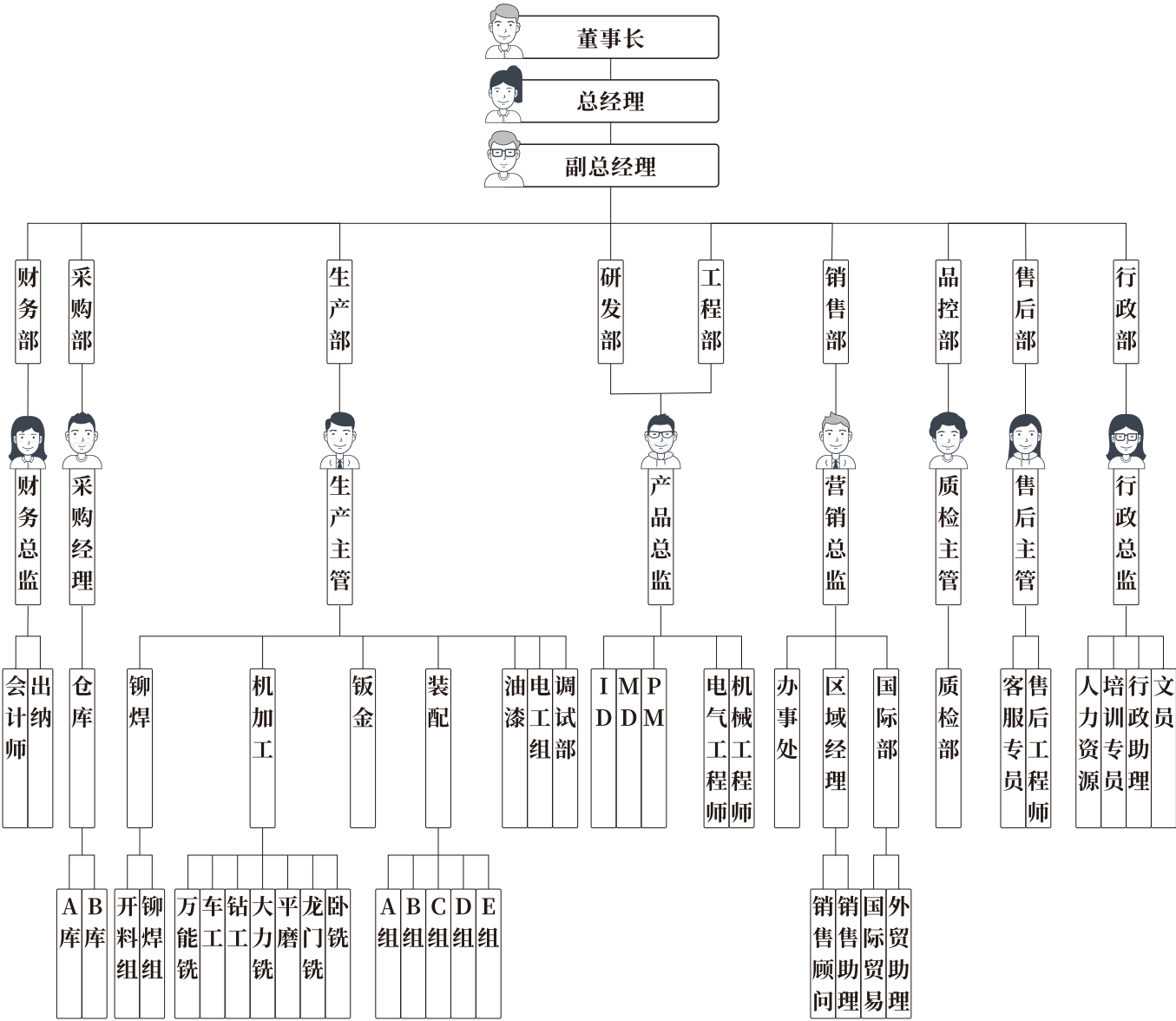
10

设计团队 /人
Design Team

30

服务团队 /人
Service Team

企业架构 | Enterprise Frame



主营项目

MAIN PRODUCTS

2010

FSM

20 22 24motors

玻璃双直边高速磨边机
Glass Double-Edging Machine

2020

FJM

10 12 14motors
22 24 26motors

玻璃双直边高速磨边机
Glass Double-Edging Machine

2019

FGS

6 9 12motors

玻璃卧式四机磨边机
Glass Four-side Edging Machine

2014

FZM

9motors

玻璃立式直线磨边机
Glass Straight-line Edging Machine

玻璃全自动双直边高速磨边生产线
GLASS DOUBLE EDGING PRODUCTION LINE

FJM

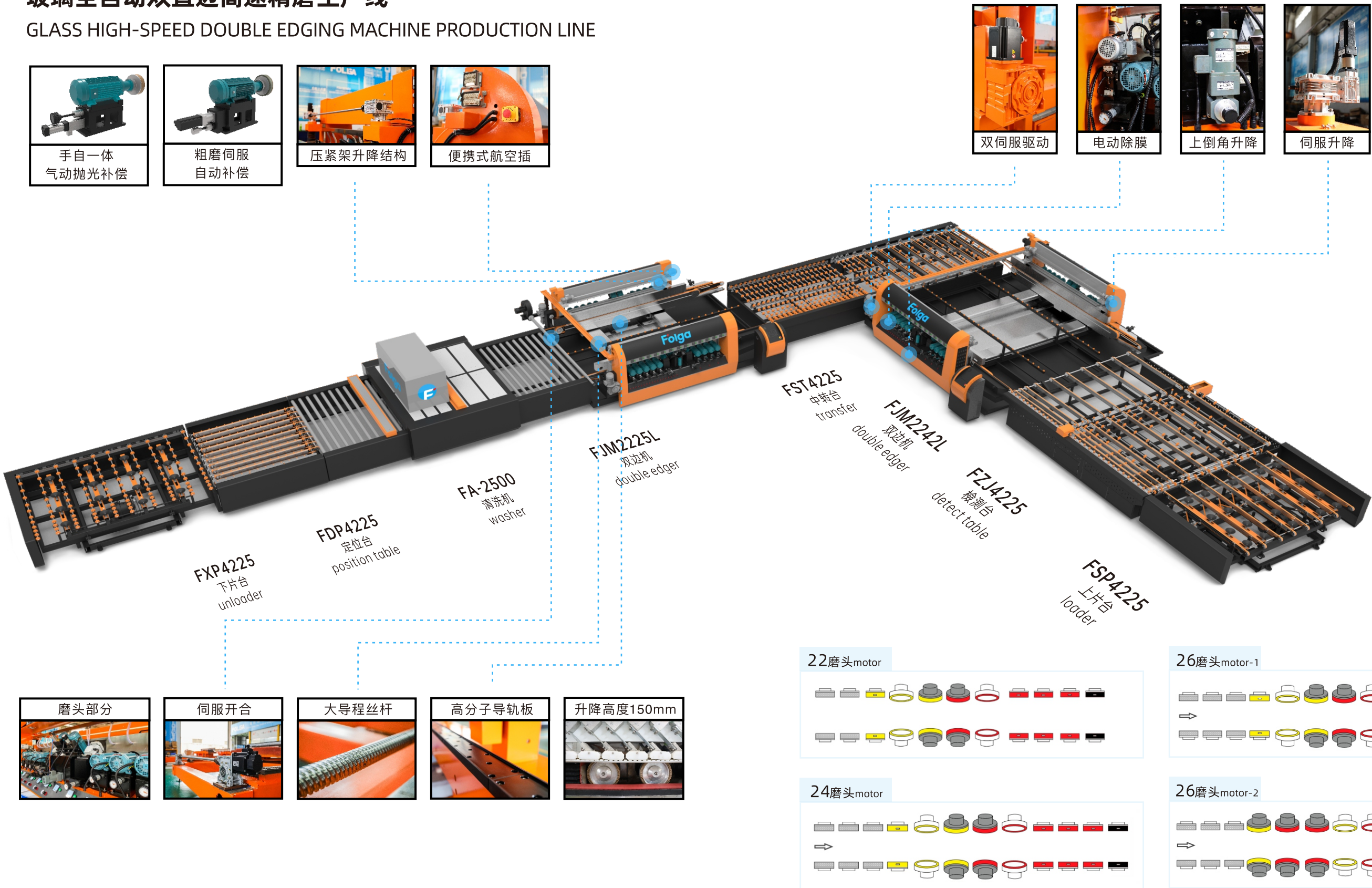
Most Effective Solution for
Batch Processing Of
Furniture & Architecture Glass

建筑玻璃

最高效的解决方案

玻璃全自动双直边高速精磨生产线

GLASS HIGH-SPEED DOUBLE EDGING MACHINE PRODUCTION LINE



玻璃全自动双直边高速精磨生产线

GLASS HIGH-SPEED DOUBLE EDGING MACHINE PRODUCTION LINE

2006

started

生产并研发

40

countries

国家和地区

1-10

pic/min

Batch Mode

整单理论产能

片/分钟

3-4

pic/min

Varies Sizes

散单理论产能

片/分钟

基本参数

Dimensions

		4225	3025	2525
最大加工尺寸	Max. Size	4200x2500mm	3000x2500mm	2500x2500
最小加工尺寸	Min. Size	300x400mm	300x350mm	300x300mm
占地尺寸	L-shape Size	14500x15000mm	13300x15000mm	12600x14800mm
占地尺寸	Overall Size	27000x6600mm	26000x5400mm	25000x4900mm

技术参数

Parameters

加工玻璃厚度	Glass Thickness	3-25mm
底边最大磨削量	Flat Edge Grinding	5mm
棱角最大磨削量	Chamfer Grinding	2mm
加工速度	Working Speed	1-20m/min
开合速度	Size Changing Speed	1-8000mm/min
相对平行误差	Parallel Error	≤0.2mm/m
对角线误差	Diagnoal Error	≤0.5mm/m
气动工作气压	Air Pressure	≥0.6Mpa
电压频率	Voltage/Frequence	380V/50Hz
单机重量	Single Weight	9.5Ton
单机功率	Single Power	74kw (24motors)
工作高度	Work Height	900±20

主要性能

Features

1. 开合采用伺服加双滚珠丝杆副及直线导轨副，自动开合，重复定位好；
Opening and closing uses the servo and the double ball screw rod pair and the straight line guide rail pair, automatic opening and closing, the repetition localization is good;
2. 磨头拖板采用双燕尾型导轨，运行平稳，振动小；
The grinding head carriage adopts double dovetail guide rails, with stable operation and small vibration;
3. 抛光采用高精度交叉滚子导轨，手自一体自动补偿；
Polishing adopts high-precision cross roller guide rail, semi-automatic compensation or full-automatic compensation;
4. 上45度倒角采用自动升降，定位准确，操作便捷；
The upper 45 ° chamfer adopts automatic lifting, with accurate positioning and convenient operation;
5. 压紧架自动升降，升降幅度大，磨轮更换便捷；
The press frame can automatically rise and fall, the rising and fall range is large, and the replacement of the grinding wheel is convenient;
6. 主传动采用双伺服驱动，换带、维护更方便；
The main drive adopts double servo drive. Belt changing and maintenance are more convenient;
7. 玻璃输送采用同步带和气动定位装置，传送平稳、定位准确；
An synchronous belt and a pneumatic positioning device are adopted for glass conveying, so that the conveying is stable and the positioning is accurate;
8. 采用人机界面，PC或PLC高端控制系统，操作简便，自动化程度高；
A Human-machine interface and PC/ PLC control system are adopted, makes operation simple and convenient, automation degree is high;
9. 在散单模式时，玻璃在进出端智能提速，节省加工周期时间；
In varies processing mode, glass can be intelligently accelerated at the inlet & outlet ends to save the processing cycle time;
10. 自动中心托架，根据开合尺寸自动对中，让玻璃平稳输送；
Automatic centering bracket, automatically centering according to the opening and closing size, so as to convey the glass smoothly;
11. 可对接ERP和扫描系统，可自动识别二维码和条形码；
System software such as ERP can be docked, matching and docking can be carried out by identifying two-dimensional codes or bar codes, and automatic marking function can also be connected;
12. 余量检测功能，用于实时检测被送入的玻璃是否超出所设定的标准余量，若玻璃超出时，会按照用户设置的速度进行降速处理，以保证玻璃加工安全。
Margin detection function, which is used to detect whether the glass sent in exceeds the set standard margin in real time. If the glass exceeds the set standard margin, the speed will be reduced according to the speed set by the user, so as to ensure the safety of glass processing.

选配项目


Optional Item


☐ 光橘
Orange


☐ 叶绿
Green


☐ 雅白
White

☐ 黛色
Black









☐ 20磨头
Motors

☐ 22磨头
Motors

☐ 24磨头
Motors

☐ 26磨头
Motors

☐ 4.2m

☐ 3m

☐ 2.5m

☐ 1.6m

☐ 增强抛光
Enhance Polished

☐ 除膜功能
Low-e / Edge Deletion

收费项目

Charge Item

☐ Logo定制
Custom Logo

☐ 尺寸定制
Custom Size

☐ 粗磨伺服补偿
Servo Compensation

☐ 抛光自动补偿
Polish Auto-Compensation

☐ 加装清洗装置
Cleaning Device for Belts

☐ Color 定制
Custom Color

☐ 扫码打标
Scan Code

☐ 远程控制系统
Remote Control System

☐ 变频提速
Converter Speed Adjustment

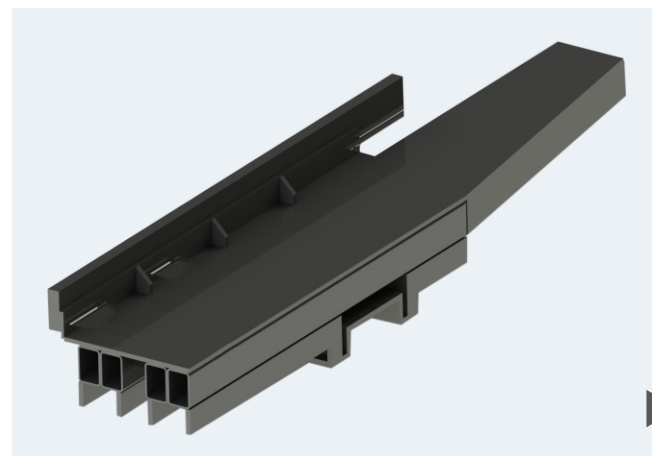
☐ 对接指定ERP系统
Connect Specified ERP System

玻璃全自动双直边高速精磨生产线

GLASS HIGH-SPEED DOUBLE EDGING MACHINE PRODUCTION LINE

底座设计采用梁式结构，纵梁横梁均采用整条矩形钢管，强度和刚度大，平稳性和安全性好。

The base adopt the beam type structure, all uses the rectangular steel pipe, high stiffness and strength, good stability.



箱体上半部分采用整条矩形钢管，底板肋板采用井字肋结构，有效提升箱体刚度和抗扭矩能力，减少箱体变形量。

The upper part of body adopts rectangular steel tube. The bottom frame is made of shaft rib structure, which greatly improve the rigidity and torque resistance and reduce the deformation of the box body.



采用大导程滚珠丝杆，配合伺服电机传动，使箱体可实现高精度、高速度以及无测间隙的微进给，确保玻璃加工尺寸的准确性；支撑采用直线导轨副，稳定性好，保证箱体来回横移平稳、震动小。

Adopt large pitch ball screw with servo motor, make the body achieve high precision and high speed movement. Adopt linear guide pair, good stability, ensure stable movement.

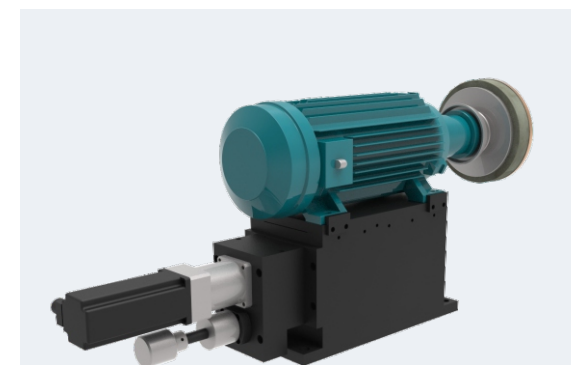


主传动由双伺服、减速机、齿轮箱、皮带和带轮组成。双伺服驱动，高效平稳有效提升玻璃加工速度。

Main drive adopt double servo motor, reducer, gear box, belts and pulleys. Doble servo motors improve working speed efficiently and smoothly.

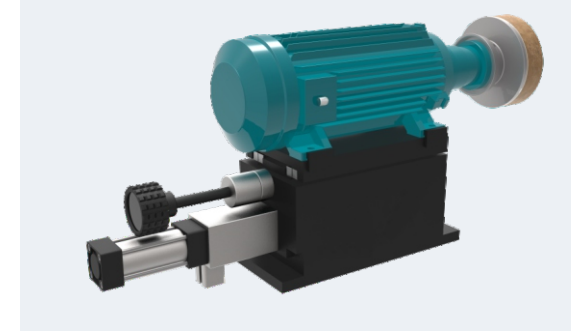
拖板伺服补偿采用燕尾结构，增大上下滑板间的接触面积，从而减少玻璃磨削时滑板间隙带来的震动；手轮与伺服之间由齿轮连接，实现手自一体控制磨轮进给量，方便调试、维护。

Drag plate of servo compensation adopt dovetail structure, increase the contact between the slides to reduce the vibration. Hand wheel and servo are connected by gear to realize manual-auto integration. Convenient for debugging & maintenance.



拖板气动补偿使用抱紧气缸，实现气动自动补偿，无需人工调节，利用气压自动调节抛光磨轮进给量，有效减少磨轮损耗，提高寿命。

Polishing compensation use holding cylinder, to realize pneumatic automatic compensation, without manual adjustment, effectively reduce the grinding wheel loss.



玻璃全自动双直边高速精磨生产线

GLASS HIGH-SPEED DOUBLE EDGING MACHINE PRODUCTION LINE



Motor Diagram

24motors

整体磨头电机排布



压紧架自动升降，升降幅度可达150mm，磨轮更换便捷。

The clamping can automatically rise and fall, the rising range is large(up to 150mm),convenient for replacement of wheel.

可选配电动除膜，实现自动化除膜，无需人手调节。

Electric film removal device is optional , which can realize automatic edge deletion operation.



上倒角升降采用精研电机，传动平稳精确;使用伞齿配合，使电机竖立安装，方便维护。

The lifting of upper chamfer adopts JSCC motors, make transmission smooth and accurate.

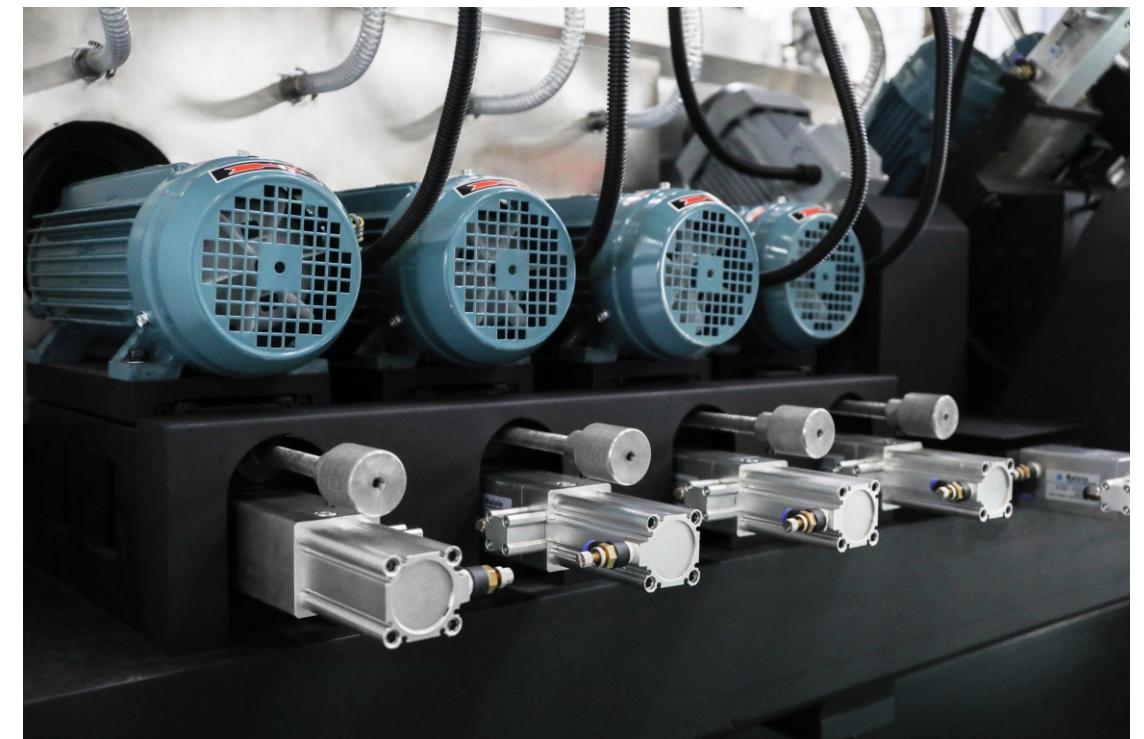
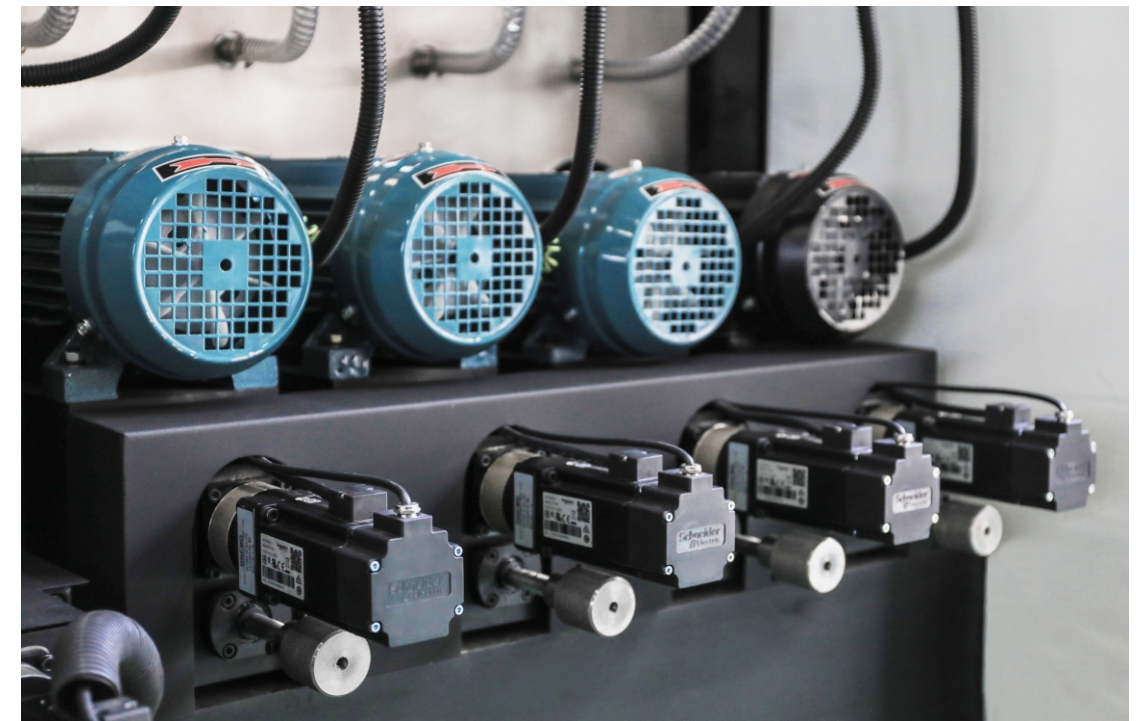
玻璃全自动双直边高速精磨生产线

GLASS HIGH-SPEED DOUBLE EDGING MACHINE PRODUCTION LINE



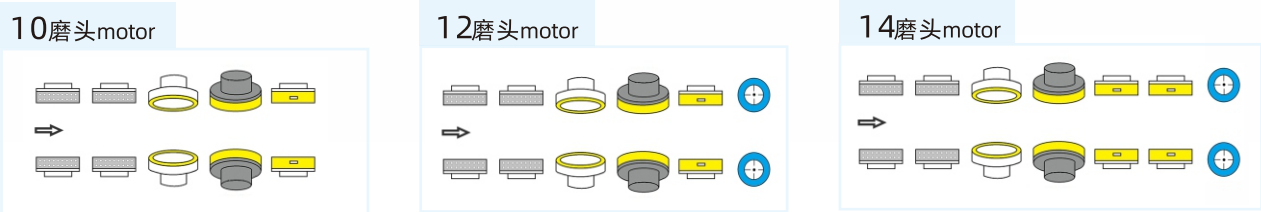
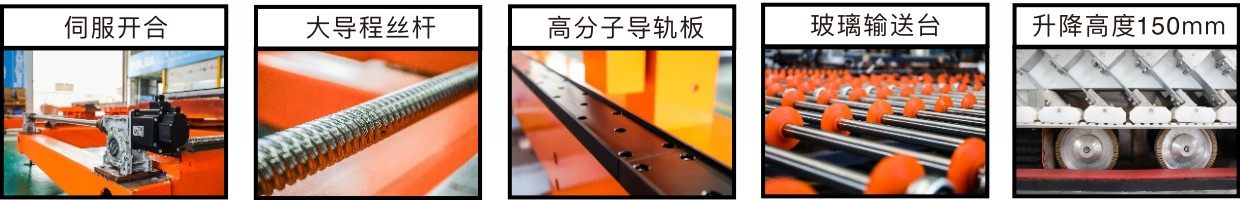
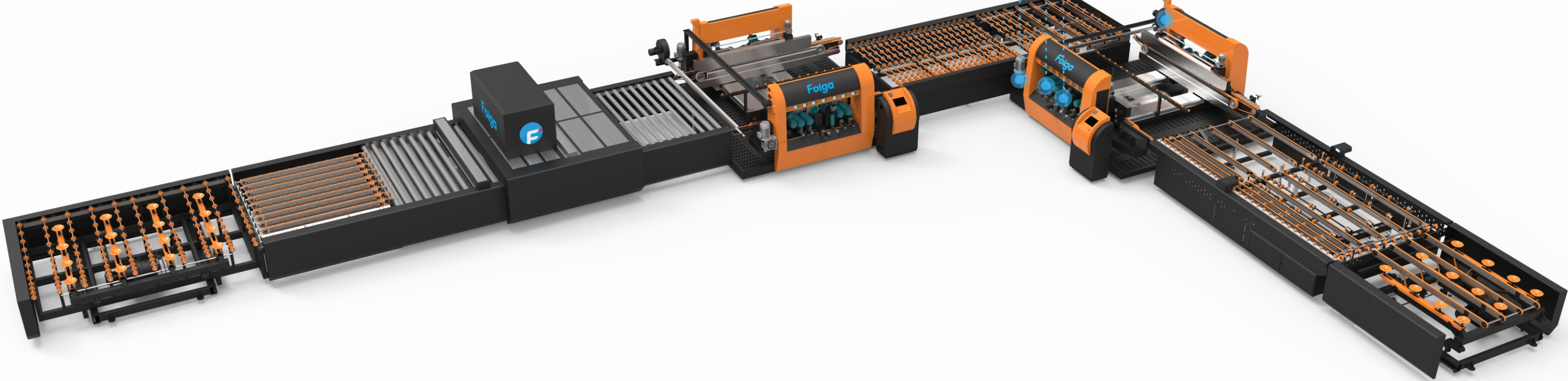
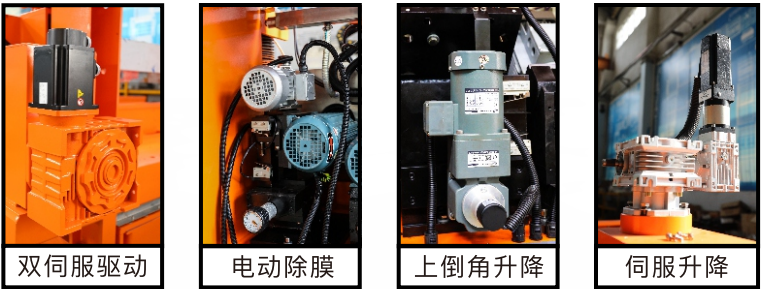
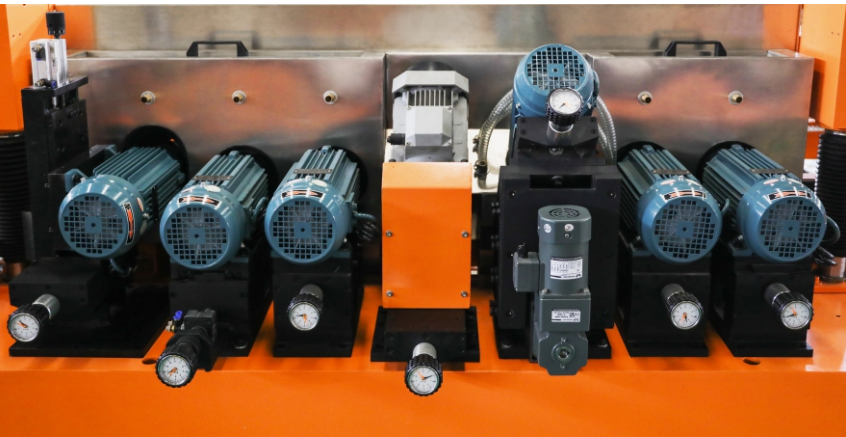
全自动伺服补偿，无须人工调节，磨轮可自动进给，有效减少磨轮损耗，提高磨轮寿命。

Adopt all servo compensation, to realize automatic compensation, without manual adjustment, effectively reduce the loss of grinding wheels.



玻璃全自动双直边高速粗磨生产线

GLASS HIGH-SPEED DOUBLE-LINE ROUGH EDGING MACHINE PRODUCTION LINE



玻璃全自动双直边高速粗磨生产线

GLASS HIGH-SPEED DOUBLE-LINE ROUGH EDGING MACHINE PRODUCTION LINE

2006

started

生产并研发

40

countries

国家和地区

1-10

pic/min

Batch Mode

整单理论产能

片/分钟

4-5

pic/min

Varies Sizes

散单理论产能

片/分钟

基本参数 | Dimensions

		3025	2516	2525
最大加工尺寸	Max. Size	3000x2500mm	1600x2500mm	2500x2500
最小加工尺寸	Min. Size	300x350mm	300x300mm	300x300mm
占地尺寸	L-shape Size	12600x12400mm	11000x12100mm	11900x12100mm
占地尺寸	Overall Size	21500x5800mm	21500x4400mm	21500x5300mm

技术参数 | Parameters

加工玻璃厚度	Glass Thickness	3-12mm
底边最大磨削量	Flat Edge Grinding	5mm
棱角最大磨削量	Chamfer Grinding	2mm
加工速度	Processing Speed	1-25m/min
开合速度	Size Changing Speed	1-12000mm/min
相对平行误差	Parallel Error	≤0.2mm/m
对角线误差	Diagnoal Error	≤0.5mm/m
气动工作气压	Air Pressure	≥0.6Mpa
电压频率	Voltage/Frequence	380V/50Hz
单机重量	Single Weight	4.5Ton
单机功率	Single Power	42kw (12motors)
工作高度	Work Height	900±20

主要性能 | Features

1. 开合采用伺服加双滚珠丝杆副及直线导轨副，自动开合，重复定位好；
Opening and closing uses the servo and the double ball screw rod pair and the straight line guide rail pair, automatic opening and closing, the repetition localization is good;
2. 磨头拖板采用双燕尾型导轨，运行平稳，振动小；
The grinding head carriage adopts double dovetail guide rails, with stable operation and small vibration;
3. 上45度倒角采用自动升降，定位准确，操作便捷；
The upper 45 ° chamfer adopts automatic lifting, with accurate positioning and convenient operation;
4. 压紧架自动升降，升降幅度大，磨轮更换便捷；
The press frame can automatically rise and fall, the rising and fall range is large, and the replacement of the grinding wheel is convenient;
5. 主传动采用双伺服驱动，换带、维护更方便；
The main drive adopts double servo drive. Belt changing and maintenance are more convenient;
6. 玻璃输送采用同步带和气动定位装置，传送平稳、定位准确；
An synchronous belt and a pneumatic positioning device are adopted for glass conveying, so that the conveying is stable and the positioning is accurate;
7. 采用人机界面，PC或PLC高端控制系统，操作简便，自动化程度高；
A Human-machine interface and PC/ PLC control system are adopted, makes operation simple and convenient, automation degree is high;
8. 在散单模式时，玻璃在进出端智能提速，节省加工周期时间；
In varies processing mode, glass can be intelligently accelerated at the inlet & outlet ends to save the processing cycle time;
9. 自动中心托架，根据开合尺寸自动对中，让玻璃平稳输送；
Automatic centering bracket, automatically centering according to the opening and closing size, so as to convey the glass smoothly ;
10. 可对接ERP和扫描系统，可自动识别二维码和条形码；
System software such as ERP can be docked, matching and docking can be carried out by identifying two-dimensional codes or bar codes, and automatic marking function can also be connected;
11. 余量检测功能，用于实时检测被送入的玻璃是否超出所设定的标准余量，若玻璃超出时，会按照用户设置的速度进行降速处理，以保证玻璃加工安全。
Margin detection function, which is used to detect whether the glass sent in exceeds the set standard margin in real time. If the glass exceeds the set standard margin, the speed will be reduced according to the speed set by the user, so as to ensure the safety of glass processing.

选配项目 | Optional Item

收费项目 | Charge Item

☐ 光橘
Orange

☐ 叶绿
Green

☐ 雅白
White

☐ 黛色
Black

☐ 10磨头
Motors

☐ 12磨头
Motors

☐ 14磨头
Motors

☐ 4.2m

☐ 3m

☐ 2.5m

☐ 1.6m

☐ 除膜功能
Low-e / Edge Deletion

☐ 抛光
Add Polish Wheel

☐ Logo定制
Custom Logo

☐ 尺寸定制
Custom Size

☐ 粗磨伺服补偿
Servo Compensation

☐ 伺服除膜结构
Servo Low-e Device

☐ 加装清洗装置
Cleaning Device for Belts

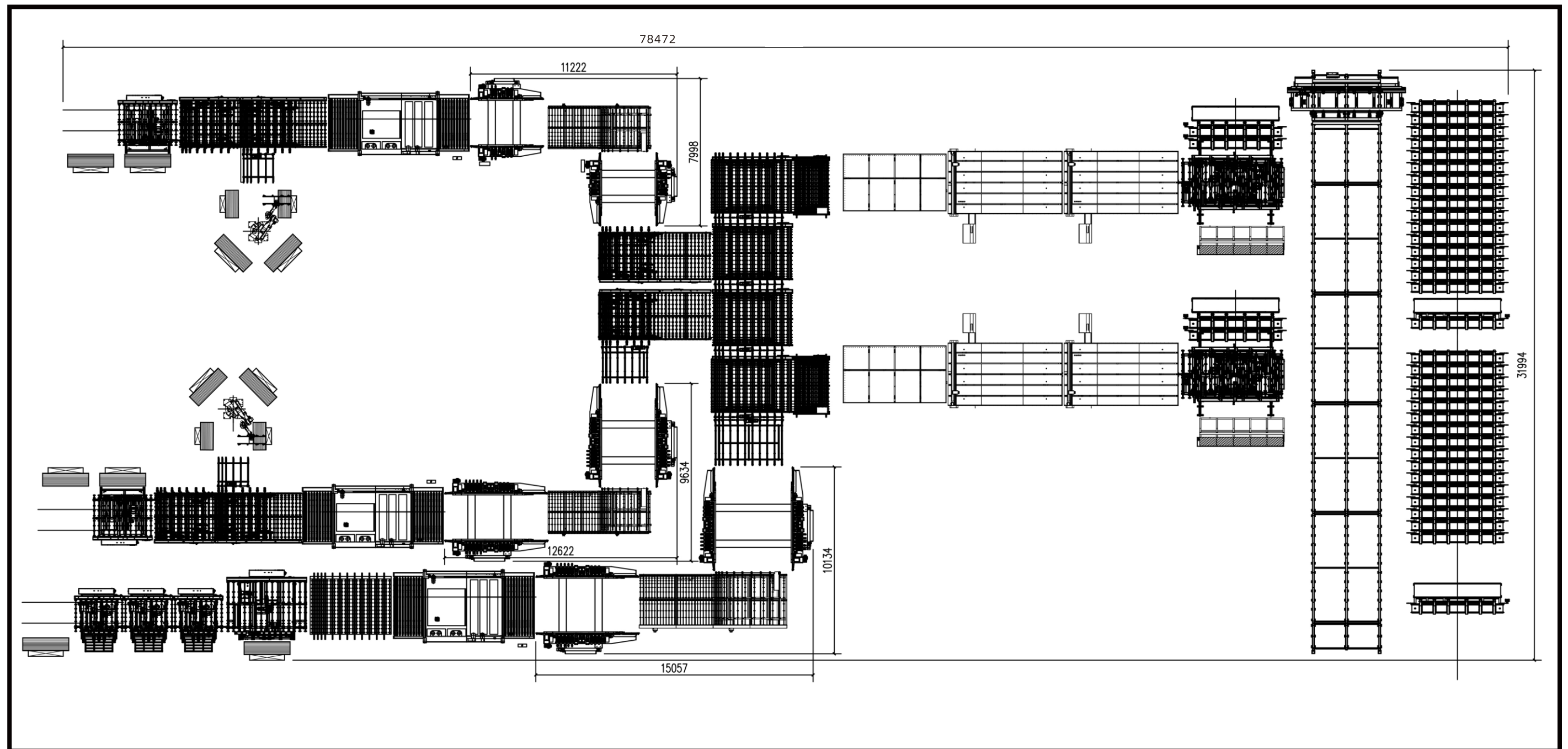
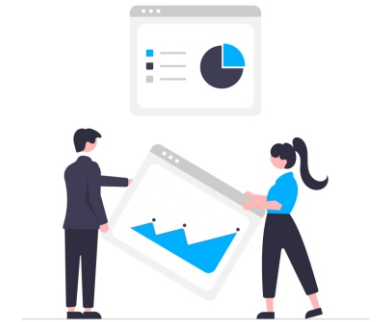
☐ Color 定制
Custom Color

☐ 扫码打标
Scan Code

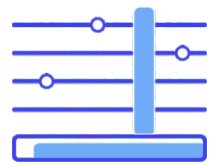
☐ 远程控制系统
Remote Control System

☐ 对接指定ERP系统
Connect Specified ERP System

☐ 其他
Other Requirments



标配功能



检测台数据

由检测台自动检测玻璃尺寸，通过检测的尺寸数据自动导入生产线进行磨边，适用于批量散单玻璃加工。



余量检测

能检测玻璃余量，解决大厚玻璃切割后坡口问题，根据检测玻璃斜口尺寸计算最佳磨边速度。



ERP对接

采用ERP系统可选配实时监控，配置显示屏可实时跟踪生产进度，显示单片玻璃加工状态，数据清晰。



扫码输入

玻璃经过切割后，将数据输入条形码或二维码通过扫描枪将条形码数据导入生产线进行磨边，适用于大批量加工



智能提速

经过粗磨磨轮后，智能提速加工，大大减少玻璃碎片现象，提升成品率，节约时间，提升磨边效率。



USB 输入

将玻璃数据输入Excel 表格内，通过U盘将数据导入生产线，数据自动匹配，适合大批量玻璃加工

FGS

玻璃全自动卧式四边磨边机生产线
GLASS HORIZONTAL FOUR-SIDE EDGER PRODUCTION LINE

中空、门窗散单

最高效的解决方案

Most Effective Solution for
Variable Insulating Glass Door & Window

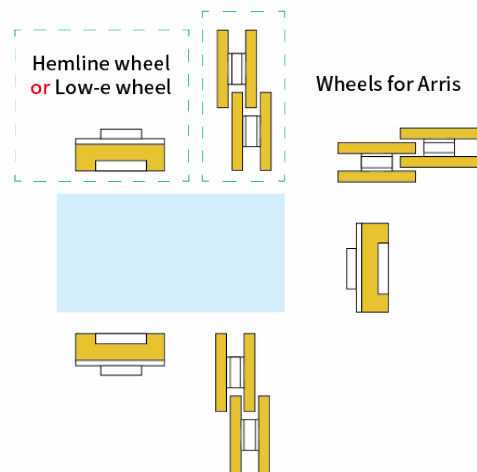
FGS SERIES

6/9 磨头

玻璃全自动卧式四边磨边机生产线

GLASS HORIZONTAL FOUR-SIDE EDGER PRODUCTION LINE

FGS 0620/0625/0920/0925 (L)



2 GIRDERS 双梁三组磨头

One machine
Two functions

同一台机可实现底边或除膜功能

- 门窗玻璃 Glass Door&windows
- 建筑玻璃 Architecture Glass
- 中空玻璃 Insulating Glass
- 散单玻璃 Varies Sizes Glass

FGS SERIES

12 磨头

玻璃全自动卧式四边磨边机生产线

GLASS HORIZONTAL FOUR-SIDE EDGER PRODUCTION LINE

FGS 1220/1225 (L)

3 GIRDERS 三梁四组磨头

3 Bridges 4 Sets of Wheel

同一台机可实现底边或除膜功能

- 门窗玻璃 Glass Door&windows
- 建筑玻璃 Architecture Glass
- 中空玻璃 Insulating Glass
- 散单玻璃 Varies Sizes Glass



玻璃全自动卧式四边磨边机生产线

GLASS HORIZONTAL FOUR-SIDE EDGER PRODUCTION LINE

2012

started

研发并生产

60

countries

国家或地区

5

pic/min

每分钟加工片数

真实数据

基本参数

Dimensions

		0620	0920	0925	1225
最大加工尺寸	Max. Size	2000x3000mm	2000x3000mm	2500x3000mm	2500*3000mm
最小加工尺寸	Min. Size	300x550mm	300x700mm	300x700mm	300*550mm
磨头数量	Wheels	2x3 sets	3x3sets	3x3sets	3x4sets
占地尺寸	Overall Size	6400x4100mm	6400x4100mm	6400x4600mm	8500x4800mm

技术参数

Parameters

加工玻璃厚度	Glass Thickness	3-12mm
磨削速度3-6mm	Processing Speed3-6mm	1-40m/min
磨削速度8-12mm	Processing Speed8-12mm	1-20m/min
棱角磨削量	Chamfer Grinding	0.5-2mm
相对平行误差	Parallel Error	≤0.2mm/m
对角线误差	Diagnoal Error	≤0.5mm/m
气动工作气压	Air Pressure	≥0.6Mpa
电压频率	Voltage/Frequence	380V/50Hz
单机功率	Power	19kw
单机重量	Single Weight	5450kg (FGS0925)
工作高度	Work Height	900±20

主要性能

Features

1. 采用双/三梁结构，三/四组磨削机构配合，加工速度可达40m/min
Opening and closing uses rack drive, working speed up tp 40m/min, more accurate, more durable;
2. 磨头组采用直线导轨、斜齿和齿条组合，传动快、稳、准
Transmission adopt linear guide rail, helical teeth and rack, more stable and accurate;
3. 整机采用伺服电机，传动更精准更快速更稳定
Adopt servo driver, make transmission more stable and faster;
4. 具有上下倒棱和底边、除膜功能，只需更换磨轮可实现功能切换
Intergrate chamfering, flat edge grinding and edge deletion function. Only need to change the wheels can realize the transformation between flat edge grinding and edge deletion function;
5. 采用人机界面，PC/PLC/CNC高端控制系统，操作简便，自动化程度高
Adopt human interface screen, PLC/PC/CNC control system, easy operate;
6. 占地面积小，散单模式下，加工效率高
Cover a small area. In varies size processing mode, efficiency is high;
7. 采用升降式探针，减少与玻璃的接触，提高探针寿命，防止玻璃表面被刮伤
Adopt lifting probe to reduce the touch with glass, improve the life of the probe and prevent the glass surface from being scratched;

选配项目


Optional Item


☐ 光橘
Orange


☐ 叶绿
Green


☐ 雅白
White

☐ 黛色
Black









☐ 6/9 磨头
Motors

☐ 12 磨头
Motors

☐ 2m

☐ 2.5m

☐ 除膜功能
Low-e / Edge Deletion

☐ 底边
Flat Edge Grinding

收费项目

Charge Item

☐ Logo定制
Custom Logo

☐ Color 定制
Custom Color

☐ 尺寸定制
Custom Size

☐ 分段输送
Sectional Conveyance

FZM

玻璃立式直边磨边机生产线
GLASS VERTICAL STRAIGHT LINE EDGING PRODUCTION LINE

矩形、散单玻璃

最高效的解决方案

Most Effective Solution for
Variable, Irregular Glass

FZM SERIES

玻璃立式直线磨边机生产线

GLASS STRAIGHT LINE EDGING PRODUCTION LINE

FZM9 9 MOTORS



立式磨边生产线适用于不同尺寸和厚度的平板玻璃的直边和棱角磨削，应用于鱼缸玻璃、卫浴、橱柜、工艺、家具、家电、建筑等玻璃的加工。

Suitable for straight edge grinding and chamfering of flat glass of different sizes and thickness, widely used in processing of aquarium, sanitary, cabinet, furniture, home appliances and architecture glass.

FZM SERIES

玻璃立式直线磨边机
GLASS STRAIGHT LINE EDGING MACHINE
FZM9 9 MOTORS



技术参数 | Parameters

加工玻璃厚度	Glass Thickness	3-19mm
最小加工尺寸	Min. Size	3000x3000mm
最大加工尺寸	Max. Size	100x100mm
底边最大磨削量	Flat Edge Grinding Amount	2.5mm
棱角最大磨削量	Chamfer Grinding Amount	3mm
占地尺寸	Overall Size	6800x1500x2500mm
工作高度	Work Height	750mm
总功率	Power	18kw



SER.

服务体系 最全面最优质服务

All About Service

What we can provide?

GLOBAL SERVICE
WHOLE-HEARTED

全球服务 全心照顾



富高关爱 无处不在

24小时在线, 随时随地, 不分昼夜
不怕打扰, 我们在听

售前服务:为客户提供售前的技术支援服务, 提升客户对富高的认知和信心

售中服务:可为客户提供产能配置、厂房规划建议、现场安装和调试指导等服务, 使客户对富高的服务感到便捷和贴心。

售后服务:为客户提供设备安装、使用及维护方面的培训, 以及今后保修服务。通过终端客户对富高服务的感受和肯定, 提升客户的认可度, 实现品牌增值。

富高不仅为客户提供优质的产品, 而且在客户考虑的角度, 从优化细节、节约成本、提高性价比、方案评测等**全方位**入手, 为您创造最大的客户价值。

与此同时, 富高依托广泛的销售服务网络、专业的科技、销售团队, 通过技术交流和专业研讨, 为客户**量身定制**各类服务。

富高人不断超越自我及提升专业的能力, 竭诚为全球客户提供高性价比的优质设备, 以及安装、调试、规划、项目设计等服务。

Service 服务内容



Pre-sale Service:

Provide technical service and planning suggestion.

On-purchase Service:

Provide allocation, plant planning advice & infrastructure construction guidance service for customer.

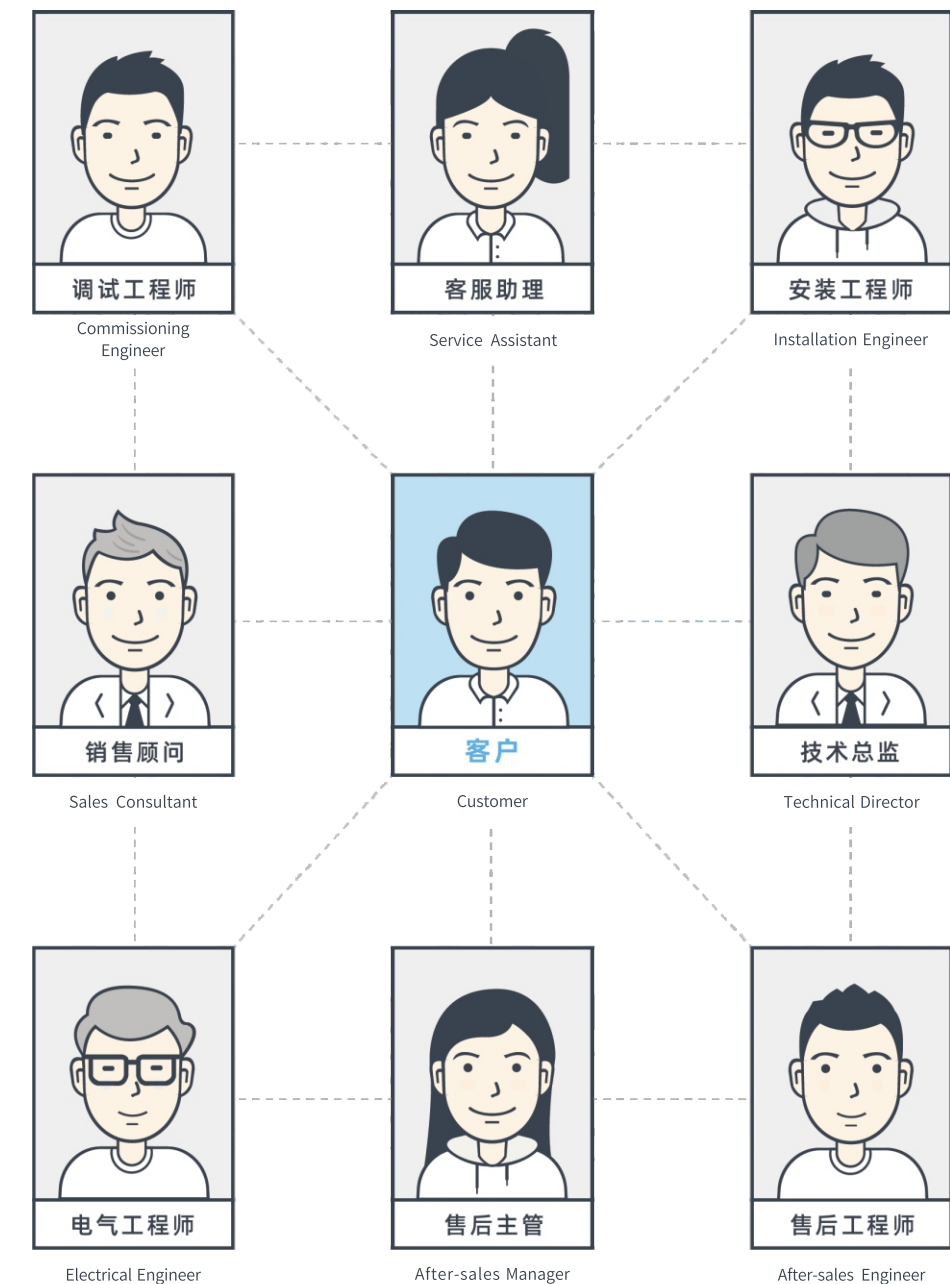
After-sale Service:

Provide installation, operation training, maintenance & warranty service. Provide remote control module that responds quickly & help customers solve problems remotely. No need to arrange worker frequently, save time & cost less.

完善服务体系，从售前沟通开始，给客户id提供场地规划方案，并全程为客户id提供咨询服务；设备到厂后，我司将安排人员到达现场进行安装调试，并为客户提供一些列规范的操作培训，设备保养及日常检修；日后我司皆会安排地区性的定期上门回访检修设备，为客户反馈设备情况及预防问题。

Explore more possibilities
for the quality and service

让客户相信质量与服务的价值



多对一服务制，意指我司多位不同部门的负责人全方位服务客户，只为更快，更具针对性为客户提供服务并解决问题；客户只需在服务群里反映问题，群内所有负责人皆可得知，并立刻给予反馈与解决问题。

Eight-to-one service system, eight personnel from different department to give customer all-round, swift and specific service. Customer only needs to report the problem in the service group, all the personnel can know it and give feedback and solution immediately.

设计理念 Design Philosophy

人性至上
Humanized

安全
Safe

简单
Simple

高效
Efficient

高品质
High-quality

智能化
Intelligent

重视产品用户的体验 Focus on the user experience

帮客户摆脱难题：

透 过 智 能 的 方 法
帮客户解决**劳动成本**问题

—— 富高

智能化设备能够带给客户的真正价值。

Help customers solve labor cost problems through intelligent methods.
This is the true value that intelligent machines can bring to customers.

Other Useful Information



地址：佛山顺德伦教街道羊大路霞石工业区七号之二

總機：+86-757-27336686

傳真：+86-757-25527810

國內銷售熱線：+86-757-25527808

國際銷售熱線：+86-757-25527809

售後熱線：+86-757-27885211

企業郵箱：info@folga.cn

官方網站：http://www.folga.cn

Add: No.7 2nd Gate, Xiashi Industry Zone, Yangda Rd,
Lunjiao, Shunde, Foshan, Guangdong, China

Tel: +86-757-27336686

Fax: +86-757-25527810

Foreign Trade Dept.: +86-757-25527809

After-sales: +86-757-25527809

Email: info@folga.cn

Web: http://www.folga.cn

官網
Website



公眾號
Wechat



致 谢

Editor-in-Chief : Angel Wu
Production Director : Hai Feng Wu
Image Representative : Zhiwei Guo
Designer & Editor : Winnie Leong
Chief Product Designer : Erick Cao
Publisher & Distribution :
FOLGA INTELLIGENT TECHNOLOGY CO.,LTD

声 明

版权所有，广东富高智能科技有限公司保留所有权利。未经本公司书面许可，不得为任何目的、以任何方式或手段复制、翻印、传播或以其他任何方式使用、本图册的任何图文。

★本宣传册不作为要约的承诺, 最终解释权归广东富高智能科技有限公司。

产品不断更新, 如有变动, 恕不另行通知。

The catalog can not be taken as the contract promise, ultimate power of interpretation is vested with Guangdong Folga Intelligent Technology Co.,Ltd. The products updating constantly, please forgive us do not issuing a separate notice if there is any designing change.